

# CONTINUOUS PROVISION

In Kingfishers

2<sup>nd</sup> February 2026

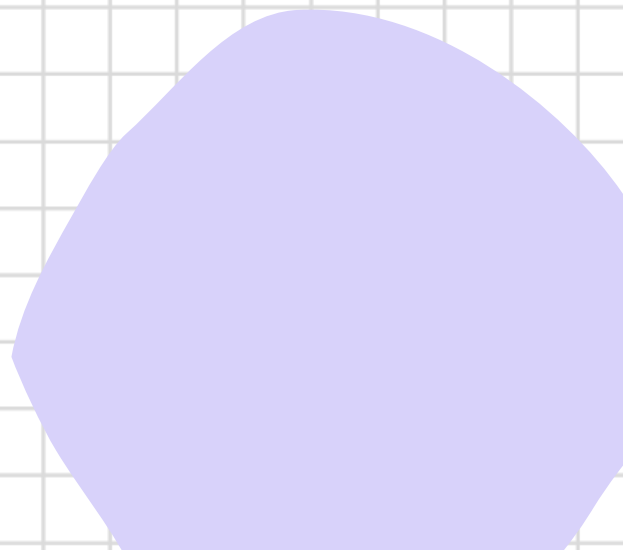
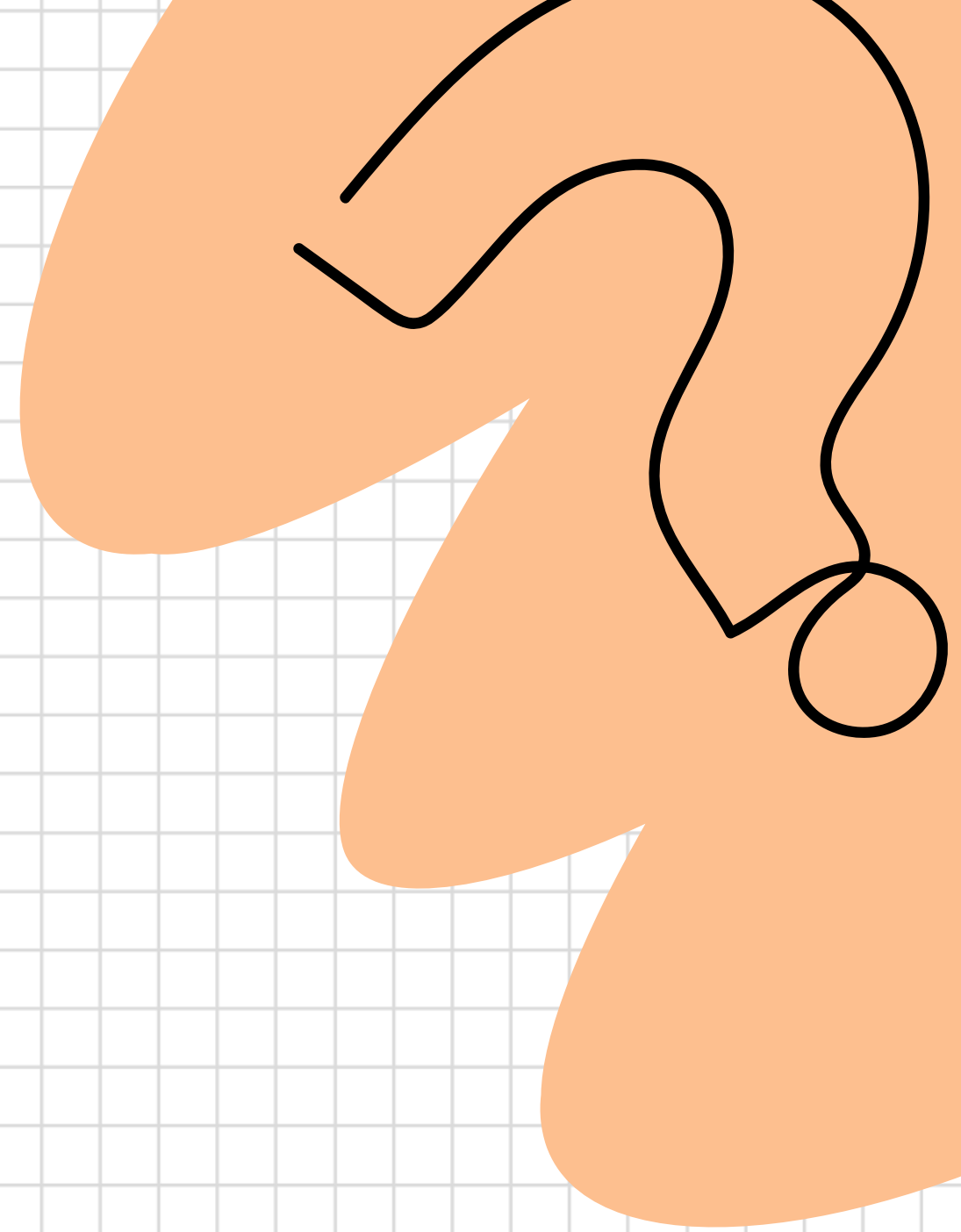
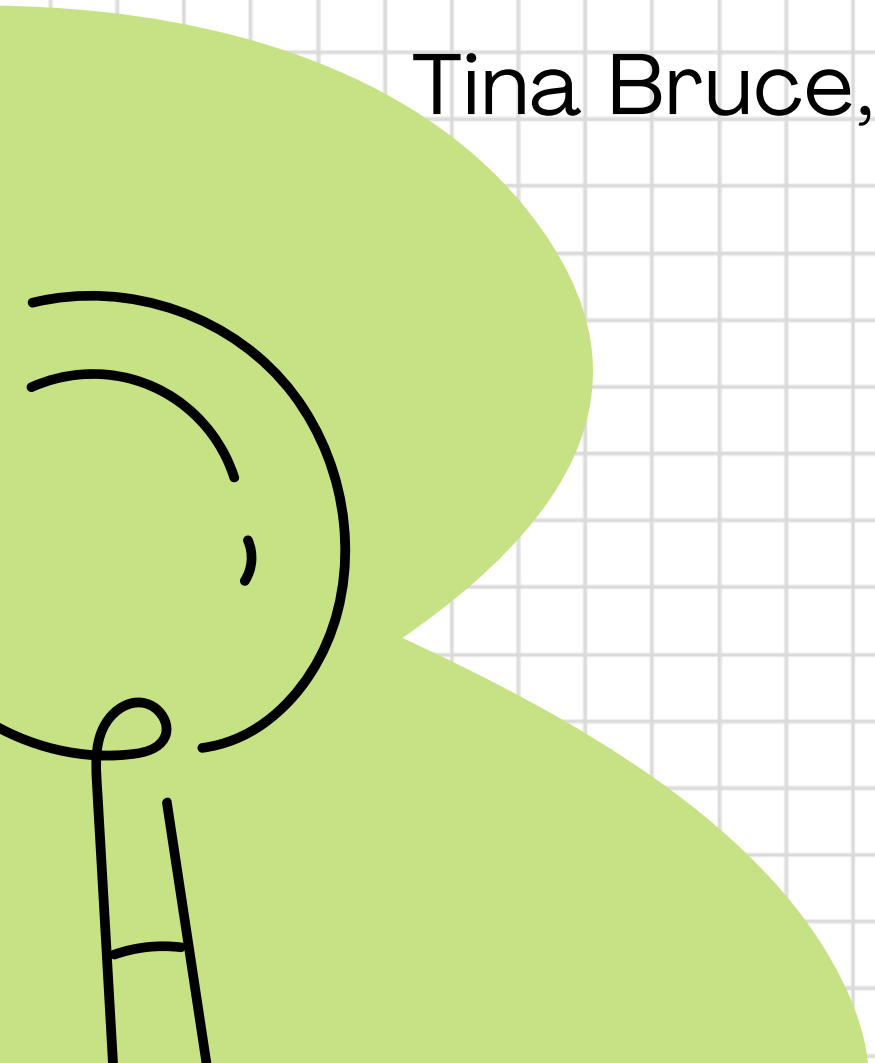
# WHAT IS CONTINUOUS PROVISION?

Continuous provision refers to resources and activities that are consistently available to children. This allows them to engage, explore and extend their learning in a structured environment.



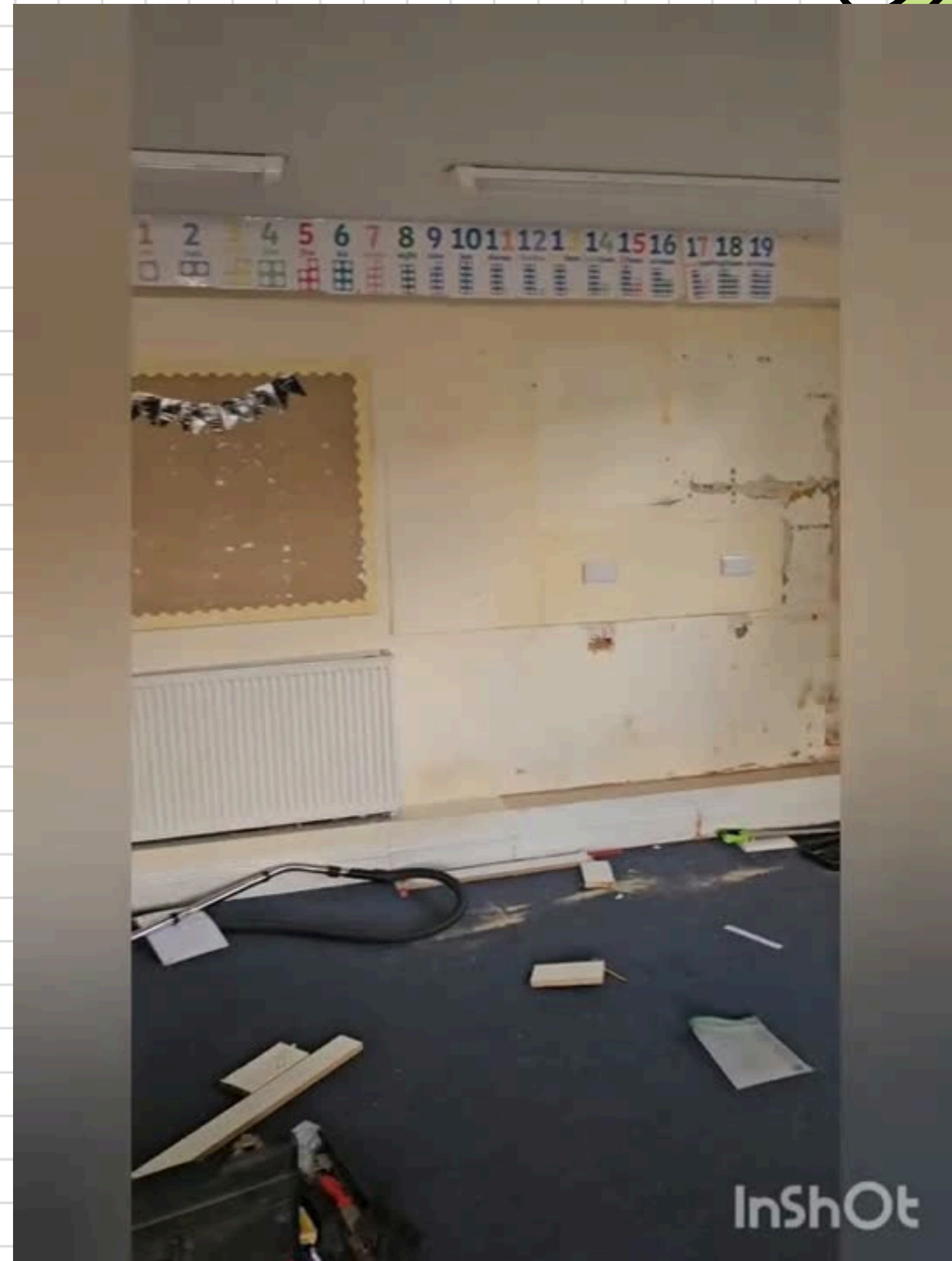
**PLAY IS NOT A BREAK  
FROM LEARNING; PLAY IS  
LEARNING.**

Tina Bruce, Early Years Specialist

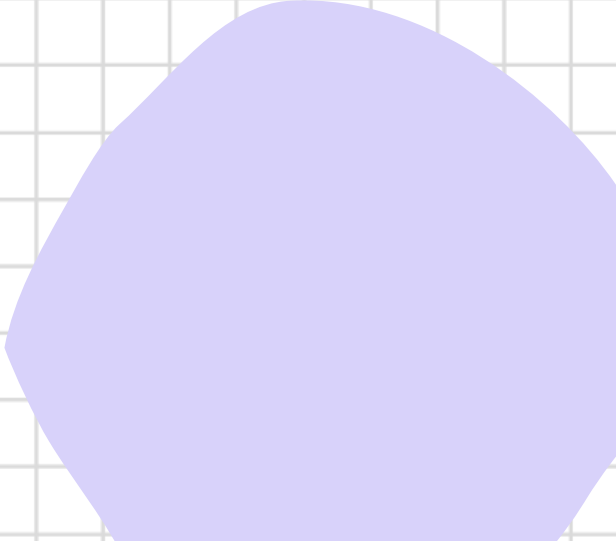
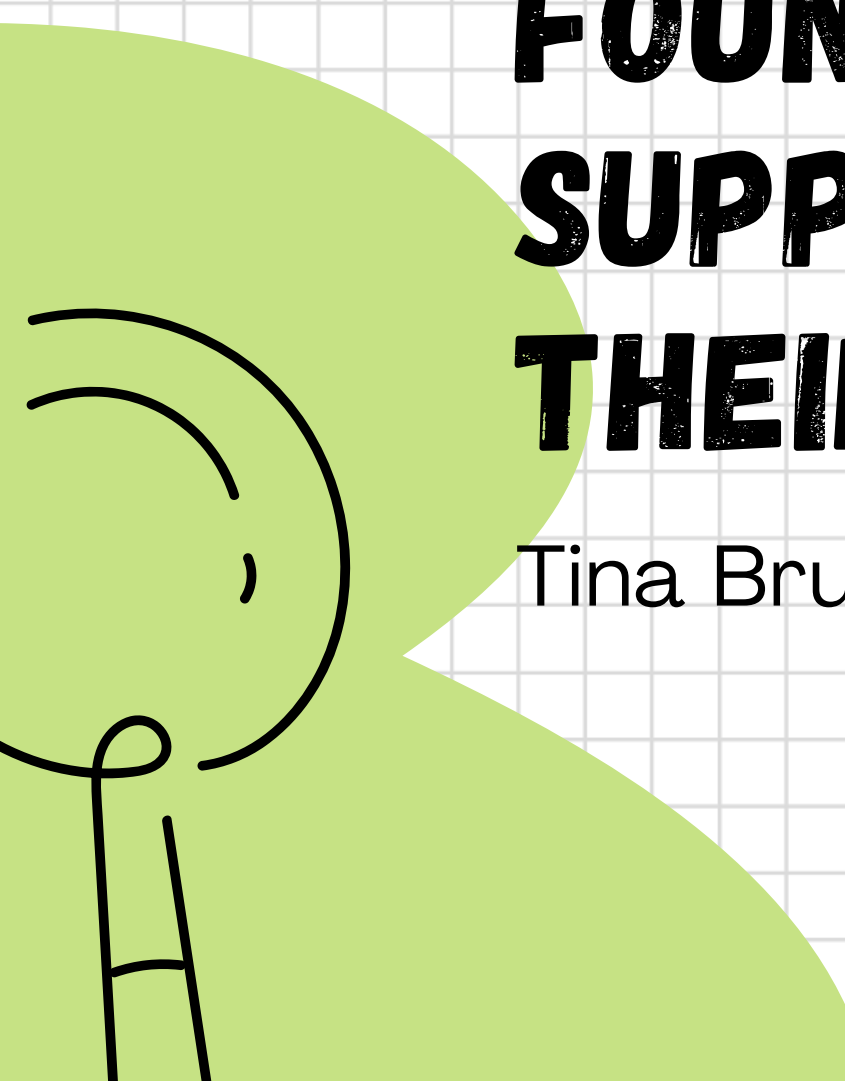
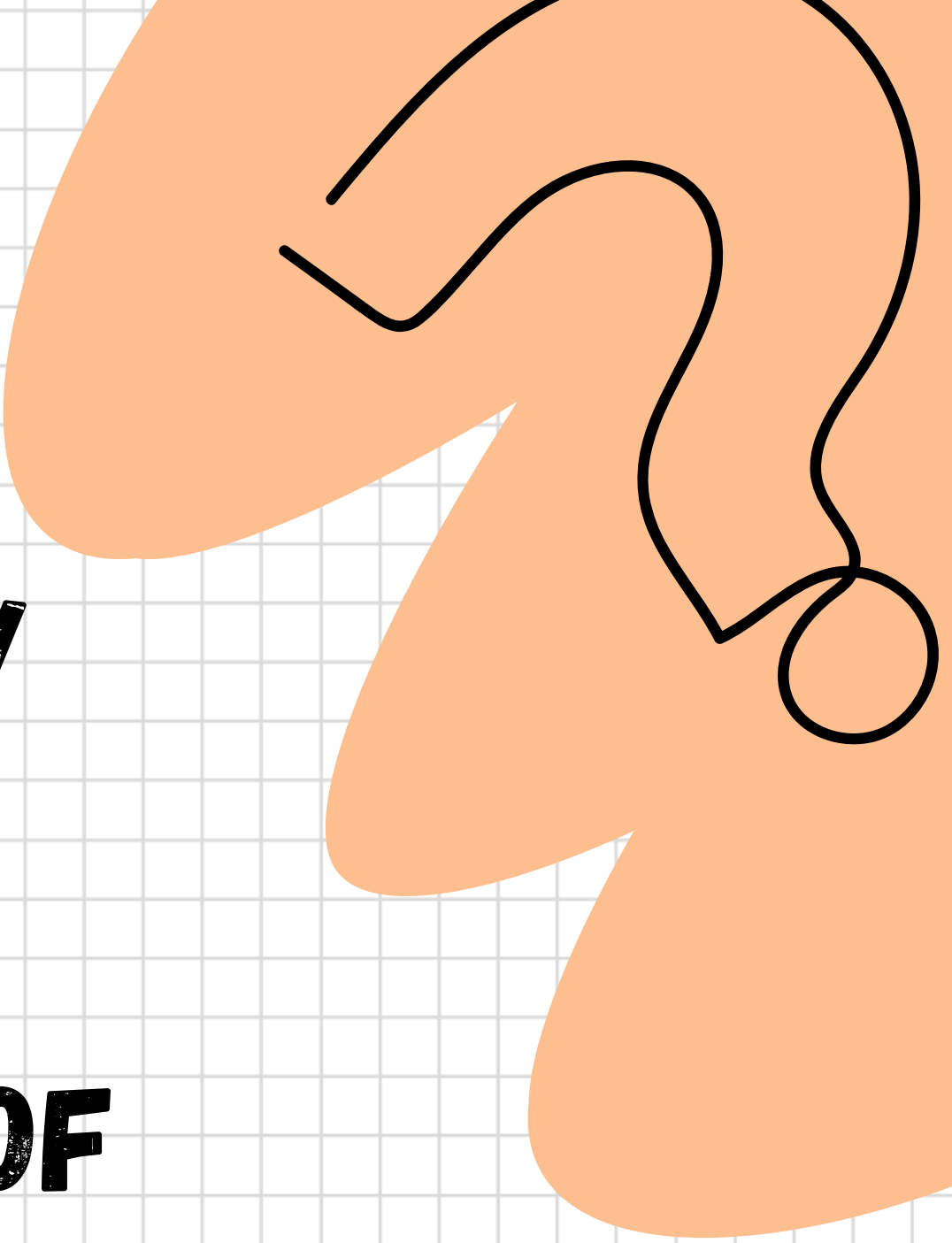


# THE JOURNEY IN KINGFISHERS SO FAR

Going from a formal learning classroom to a continuous provision classroom meant we had to strip the room back to basics, and start again! This took time, money and a lot of effort! These changes are ongoing and I am constantly tweaking the classroom.



InShot



**BY PROTECTING PLAY BEYOND  
RECEPTION, WE PROTECT  
CHILDREN'S NATURAL CURIOSITY  
AND LOVE OF LEARNING –  
FOUNDATIONS THAT WILL  
SUPPORT THEM FOR THE REST OF  
THEIR LIVES.**

Tina Bruce, Early Years Specialist

# CPD

Summer 2025 - Emma visited Red Marley and Tibberton to get initial ideas and see CP classrooms in action.

Summer 2025 - Emma revisited Red Marley with Charlotte Denham.

October 2025 - External visit from Helen Tate (CP Specialist) and Sarah Smith (PQ) - a very positive visit with great feedback and constructive suggestions for improvements, some of which I have put into place.

November 2025 - External visit from Sarah Smith and Lucy Buckland (PQ). Also a positive visit and Sarah was pleased to see changes from previous visit. Discussed areas of improvement for future.

Ongoing - Emma using teaching/education social media to gain ideas and talk with other CP teachers.

February 2026 - Arianna Gilbert (Red Marley) visiting Gretton to spend time in the classroom and discuss timetabling/enhanced provision.

February 2026 - Emma and Charlotte to visit Ann Cam and Tibberton for professional development.

# VISIT KINGFISHERS AND YOU WILL SEE....

## **CONTINUOUS PROVISION**

These are opportunities for the children to learn through play and are available all day, every day. They may change slightly throughout the year.

Resources include:  
Construction area, Small World area, Reading nook.

## **ENHANCED PROVISION**

This provision is more tailored to specific learning, and is provided, and planned for, by myself to link to current learning units and themes.

Examples include:  
Writing a story on the writing table, weighing natural objects, creating a habitat for an animal (science), creating artwork.

## **GROUP WORK/LEARNING**

Children will always complete work in small groups, often with adult support, but sometimes independently. This is where we can assess understanding, challenge and explain misconceptions and allow children to complete specific learning tasks.

# HOW WE EVIDENCE LEARNING IN KINGFISHERS...

## INDIVIDUAL BOOKS

We use individual books

for:

Maths

Writing

Phonics

Science

Art

PSHE

## FLOORBOOKS

A floorbook is like a presentation of what we learn in each lesson. It can be made up of photographs, examples of work and quotes from the children.

We use floorbooks for:

Geography

History

Computing

RE

## WOW BOOKS

These are individual, child owned books, where they store work from Enhanced Provision. These books generally aren't marked, but I look at them weekly and sometimes work is ticked or commented on if children have completed it with an adult.

We encourage the children to take pride in these books and use them as a tool to 'show off' what they can do!

# LEARNING IN KINGFISHERS....



# LEARNING IN KINGFISHERS....



# PLANS GOING FORWARD....

## HAVE ONE ADULT IN PROVISION

We are planning to restructure lessons to enable either Mrs Denham or myself to be in provision with the children, to support learning, challenge misconceptions etc.

## CONTINUE TO ENHANCE THE ENVIRONMENT

We want to ensure the classroom is evolving and improving - plans include adding a sink/art area, adapting based on children's needs. We would love an outdoor area - this may be KF accessing Robins area at set times.

## INCREASE RESOURCES

What we would love:

- More books, specifically Non fiction linked to learning units.
- Small world resoures, e.g. carpet square, wooden tracks, natural items, e.g. conkers.