



Friday 16th January 2026

Dear Parents and Carers,

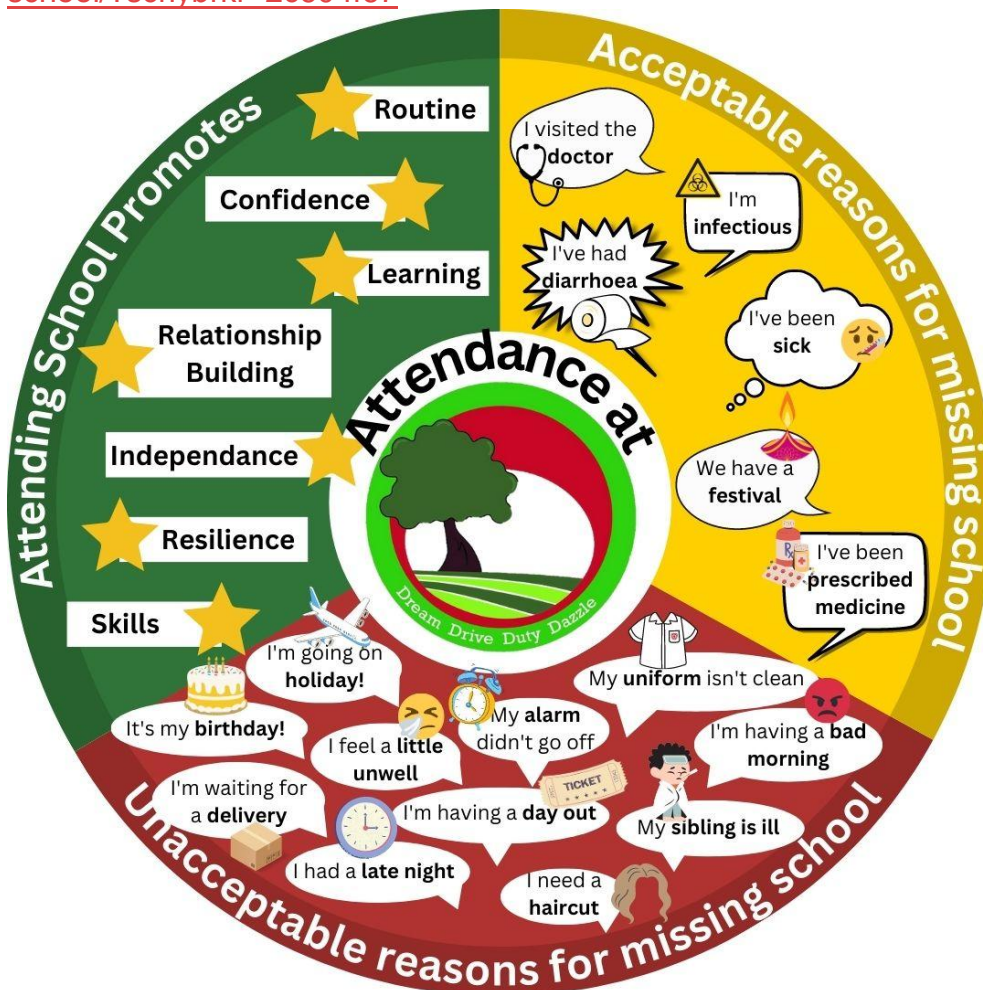


Due to Young Voices there will be no gold book etc this week but will return next week!

A Focus on Attendance

What is 'good' attendance and why is it important?

- Being in school every day gives your child the best chance possible to achieve their potential.
- It is the local and national expectation that children attend school 100% of the time. However, it is important to note that we understand exceptional circumstances and illness happens. Your child's health and wellbeing are important to us. Please check the NHS website for guidance on illness in school or please call our office to discuss further. <https://www.nhs.uk/live-well/is-my-child-too-ill-for-school/?scrllybrkr=2c604f67>



What does the *Department for Education* say about attendance?

Attendance at school isn't just important, it is a legal obligation for children over the age of five. As the DfE notes, '*Improving attendance is everyone's business*', and it is important that we, as your child's school, work together in partnership with you, your family, your child, and the wider community to improve attendance.

The new **Working Together to Improve School Attendance** Guidance emphasises a 'Support First' ethos, and recognises that '*the barriers to accessing education are wide and complex, both within and beyond the school gates, and are often specific to individual pupils and families... [It] is essential for pupils to get the most out of their school experience, including their attainment, wellbeing, and wider life chances.*'

Authorised attendance

- You have informed the school that your child will not be in and the reason you have provided is acceptable. For example, a sickness bug.

Unauthorised attendance

- Your child does not attend school and you have not informed us of the reason why, or the reason provided is not acceptable. For example, you kept your child at home for their birthday.

Lateness

- The register closes at 9am.
- After 9am, your child will be registered as 'late' and the minutes of lateness will be recorded.
- If your child arrives later than 9.20am, without a legitimate reason, this will be coded with a U code (later after register closes) which is classed as unauthorised absence.

What should I do if I am struggling to get my child to school?

Get in touch! We are a support first school and there are many things we can do to help you get your child into school.

However, if you do not engage with the support the school has put in place and your child continues to have unauthorised absences you are at risk of a penalty notice.

Extra information...

Think Pharmacy First

Most pharmacies in England are now providing the Pharmacy First service.

This free NHS service allows you to get quick access to healthcare advice for the following seven conditions:

- § Earache (aged 1 to 17 years)
- § Impetigo (aged 1 year and over)
- § Infected insect bites (aged 1 year and over)
- § Shingles (aged 18 years and over)
- § Sinusitis (aged 12 years and over)
- § Sore throats (aged 5 years and over)
- § Urinary tract infections (UTIs) in women (aged 16 to 64 years)

If you have symptoms that suggest you may have one of these conditions, you can walk into a pharmacy and be offered a consultation with a pharmacist in a private consultation room.

The pharmacist will provide advice and, if clinically necessary, a prescription medicine to treat the condition (NHS prescription charges apply if you normally pay for medicines supplied on prescription).

Think Pharmacy First!

Find out more by visiting the web link [nhs.uk/thinkpharmacyfirst](https://www.nhs.uk/thinkpharmacyfirst)



Thank you from North Cotswold Foodbank

On behalf of the Trustees and volunteers of North Cotswold Foodbank, thank you to everyone at Gretton Primary School for your generous recent Christmas Appeal food donation which totalled an impressive **23.96kg**.

Demand for our Foodbank continues to rise, largely due to increasing energy and food costs, and the majority of those we support are low-income, working families facing difficult circumstances.

Your donation will help ensure we remain well stocked over the coming months so we can continue to support those in need within our local community.

We are extremely grateful for your kindness and ongoing support. It truly makes a meaningful difference to many lives.

Thank you

Thank you for taking the time to read the newsletter, if there is anything that you would like to contribute please feel free to email me head@gretton.gloucs.sch.uk or the office admin@gretton.gloucs.sch.uk

Mr Sallis and the Gretton Team



Let's eat
CAKE!

**CLEEVE
'HOUSE COLOURS'
CAKE SALE**

FRIDAY 23RD JANUARY @ 1510

SCHOOL HALL

PLEASE DROP OFF CAKES IN THE HALL IN
THE MORNING (WHERE POSSIBLE)- THANK
YOU.

ALL PROCEEDS TO FOGS FUNDRAISING

2026 Diary Dates

Thursday 22nd January – Swimming Gala

Friday 23rd January – SENDCo Surgery
Cleeve Cake Sale, House Colours Theme

Monday 26th January – My Plan meetings this week

Friday 30th January - Break the Rules Day

Thursday 5th February – Cross Country Race 4

Monday 9th February – Children Mental Health Week

Thursday 12th February – Cross Country Race 5

Friday 13th February - Stanley Cake Sale

Thursday 5th March – Cross Country Fun Run

Friday 6th March – FOGS Hotdog Night

Monday 16th March – Parents' Evening Week

Sunday 22nd March - Easter Egg Hunt (Gretton Village)